



NORTHWEST CHIPPINGS

PO Box 6092
Federal Way, WA 98063

2011 Issue
October

Chips From The Prez

Hi to all fellow woodcarvers:

How fast time is moving - - middle September already. Everything is gearing up for our show which is coming upon us. I hope you are all working on your entry pieces, we need all the registrations we can get. Remember, only YOU can make a good show happen by doing your part. We want to be able to count on you when its time to work at our show set up and any other job that needs to be done. Many hands make the work that much lighter.

I will be going to Longview for their show, so our club will be supporting them to help make a good show for them.

If you haven't been to a club meeting lately come and see how our club is doing. Help yourself at the great potluck that has had so much good food for every meeting.

Well, keep the chips flying.

Your president Dale Goebel



NORTHWEST CARVERS

2011 OFFICERS

President ~ Dale Goebel
253.531.6863
teawood54@comcast.net

Vice Pres ~ Loyd Case
253.833.1401
lcasesr@comcast.net

Secretary ~ Kay Lang
253.952.2152

Treasurer ~ Vicky Rowe
206.841.6238
winkin1wa@hotmail.com

Show Chair ~ Bob Harkness
253.833.4626
c.l.harkness@att.net

Membership ~ Greg Hammock
253-347-8105
greghammock@hotmail.com

Librarian ~ Brian Hogan
253.839.2923
Bphogan1@aol.com

Newsletter ~ Betty Miller
253.848.8495
bzmillier@comcast.net

Historian ~ Dottie Moody
253.604.4875
moodye@comcast.net

Sunshine ~ Marylu Chico Tiglao

Hospitality ~ Richard LaPlante
253.569.2140
Bob Harkness
253.833.4626
c.l.harkness@att.net

Webmaster ~ Betty Miller
253.848.8495
webmaster@woodcarvers.org

Steering Committee Members

Evelyn Templar, John Templar, Richard Mazza, Larry Smart, Dave Thompson, Caryn Templar

Steering Committee meets 6:30
1st Friday of each month
at the Sumner Public Library

!!! I KNOW YOU ARE OUT THERE !!!

Find your lonely carvings that want to get out to socialize with other carvings.

Let's have a party at the November Show & Sale. Plus there is still time to finish the one you're are working on. Come on Carvers. Beginners are encouraged to enter as well as every other level, including a judges table just for viewing. LET'S TRY FOR 100%

NOVEMBER 12-13

MAIL-INS~WALK-INS~MEMBERS~NON-MEMBERS~ALL WELCOME





**ELECTION TIME ~ VOLUNTEER
FOR
OFFICE**



**NWCA
2012**



2011 CANDIDATE

It is time for **you** to nominate a carver for the NWCA "Beginner Carvers Achievement Award". Write a short nomination letter for the person you are nominating stating the reasons you think he or she should receive the award, then give the paper to a member of the steering committee. **A carver of one year or less experience** will be chosen by the steering committee from a list of nominees taken from club activities or class participation who shows **enthusiasm, potential, and an eagerness to learn.** The award shall be a one year honorary membership in NWCA, a new carving tool (or tools), and a Certificate of Merit with the names of the memorial honorees written on it, all to be presented to the award winner at the designated time. Previous winners have been Kailonna Crawford and Meredith Doll.



Internet News

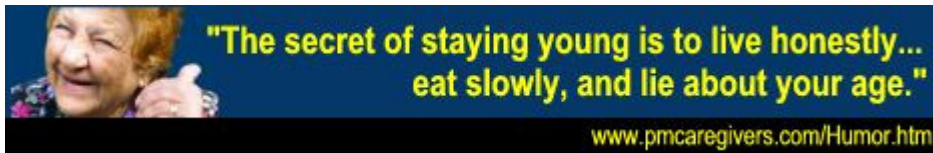
Earlier this year we had a video on the work of Paul Boyer, a 90 year old carver and animated figurine maker from Belleville, Kansas. He has a museum with his work and he also has a website where you might enjoy seeing his work again if you were at the meeting or for the first time if you didn't see the video. Wonderful ingenuity.

<http://www.kansastravel.org/boyergallery.htm>

There are some brief instructions on carving eyes, ears, hands, etc. at this site that may help you some. I didn't survey it too well so I'm not sure what you'll learn without buying a video. <http://www.texaswoodcarvers.com/Pages/CarvingVideos.htm>

Are you a beginner carver? There is some excellent information at this website on sharpening your tools on the cheap. I may use it in the newsletter later but for now take a look at <http://deepwoodsventures.com/beginner.html>. You can click on "How to Sharpen" from there. They also have that cute mouse pattern and a cutie of a long-legged reindeer for your Christmas tree.

If you did not receive a prospectus for some reason, there is now one online at http://www.woodcarvers.org/prospectus_registration_forms.htm so get your carvings pre-registered for the November Show. The registration form is available to download separately. A banquet form is included in this newsletter. Any donations to the auction at the banquet or to the raffle table at the show will be greatly appreciated.



Some Carving Class Schedules

Summit Library

5108 112th St E, Tacoma, WA
253.536.6186

Oct 8 12 to 4
Oct 22 12 to 4
Nov 19 12 to 4

Kent Sr Activity Center

600 E. Smith St.
Kent, WA 98030
Every Wed. 9:30 to 11 am

Sumner Senior Center

15506 62nd St E, Sumner, WA

253-863-2910
Every Friday 12 to 4

Puyallup Senior Center

212 W Pioneer, Puyallup, WA

253-841-5555
Every Thursday 9 to 12

Algona/Pacific Library

255 Ellingson Rd Pacific WA
253-833-3554

Sep 24 5 to 8
Oct 3 5 to 8
Oct 24 5 to 8

Enumclaw Sr. Center

1350 Cole Street

Enumclaw, WA
360-825-4741
Every Wed. 12 to 3



Oct Program

*Meredith Doll to present
program on finishing
your carving.*

"Painting Wood"



General Meeting Minutes Sept. 9

The Potluck was at 6:15 pm and the meeting started at 7:00 pm with 22 people attending.

Dale had the newsletters, magazines, and other mail from different woodcarver groups and a thank you letter to Bob Harkness from the Pioneer Festival in Tacoma. The Spokane Show is the 1st and 2nd of October and the Cabella store show is the same day. Lots of people entered carvings in the Puyallup Fair and won some nice prizes. Carvings are also at the Fred Oldfield Western Heritage and Art Center at the Fairgrounds that are for sale. Bob thanked me for being at the Pioneer Festival. Just Bob and I spent the day there carving.

Bob has a list for jobs at our Woodcarvers show in November. He is setting up and still looking for help to set up tables so if you can help out, let Bob know. Also looking for new ideas. He is going to check with Wilson High School for Ribbon Runners and judge helpers.

Loyd Case wants to recruit people to join the club. Talked about carving at the General Meetings, continuing the potluck, demos, and DVDs or what else might bring in new members. Meredith Doll will be doing the next demo at the October meet-

ing on "Painting Wood".

Officers elections coming up in October. Would you like to be a club officer?

Treasurer's Report: Vicky gave us our financial report. There was no raffle tonight. Coffee donations totaled \$4.75 and only .75 was collected for no name tags. Other figures announced at the meeting and are available to members upon request. The tables were purchased for club use. The final payment was made for the Fairground space for the Show. Vicky has posters for the show for anyone who can hang them in public places to advertise for the show. Lots of us took some to hang up. Richard LaPlante said we will have a speaker system for the show with 3 speakers this year for \$235.

Brian Hogan has picked out a variety of books for you to check out from the library.

Show & Tell: *Bob Harkness* brought his Western Meadowlark perched on a log, cedar on a mahogany base, he painted the bird. *Brian Hogan* brought a Rooster he carved from a picture in Chip Chats. It was on a driftwood base with a sign pointing to the Rooster was headed. *Dave Thompson* bought

an egg with chip carving design he had done. He and Marlo went to a chip carving class in Montana. *Jim Collins* brought his oak candlestick Lady. He used linseed oil to soak the oak before carving and finished it with oil. He also brought a Cypress Knee Wizard with a bird sitting on his head. *Dale Goebel* brought a carving of Mickey & Minnie Mouse and Pluto standing in front of a white picket fence. His carving was 32 years old.

I wish I had all the nice words to describe each of these beautiful carvings all of you did. Keep up the nice work.

Program: DVD

A video by [Stenman Studios](#) on woodburning was shown. Elaine Stenman traces the drawing with pen but when drawing on the wood she said to use a pencil. Burn between 4 and 5 heat and she said you got a nicer burn with the foot of the tip, not the tip. She showed how to burn the entire log cabin, then did trees and shrubs with another tip, then changed back to the first tip for the boat and grass. Advised you to clean the tips with a fine sanding pad from time to time. It was a good DVD with lots of information.

Kay Lang, Secretary

Entries at Puyallup Fair

Many of our members entered their work at the fair and did quite well. See more of them on pg 7



FOR SALE

14-piece set of Marple Sheffield English-made wood-handled tools once used by my father so I want them in the hands of a serious woodcarver. Average prices on E-Bay and Amazon are about \$10.00 each. Included are six other miscellaneous carving tools. Asking \$140.00 cash only. Located in Madison Park, Seattle.

budlowe1@q.com

SANDPAPER, what grit should I use?

The grit you use depends on what you are trying to do. The following table is a general guide to the proper uses, although this may vary from wood species to species.

Grit	Name	Common Uses
40-60	Coarse	Heavy sanding and stripping, roughing up the surface.
80-120	Medium	Smoothing of the surface, removing smaller imperfections and marks.
150-180	Fine	Final sanding pass before finishing the wood
220-240	Very Fine	Sanding between coats of stain or sealer.
280-320	Extra Fine	Removing dust spots or marks between finish coats
360-600	Super Fine	Fine sanding of the finish to remove some luster or surface blemishes and scratches.

So what's the difference between Commercial and Industrial grades?

There are three main components to sandpaper; the abrasive grit, the backing material, and the bonding agents. Industrial grade sandpaper uses higher quality components as well as tighter manufacturing tolerances.

Abrasive Grit – Industrial grade sandpapers use abrasive grit material that is stronger and less likely to break down or wear out. Higher quality grits are often very finely graded to ensure consistency.

Backing Material – Commercial grade sandpapers tend to use Kraft paper or low-grade fabric as a backing material. Higher grades of backing material are often made from fine cottons or polyesters.

Bonding Agent – The bonding agent is the glue that attaches the abrasive to the paper's backing. Lower grades of sandpaper are often made from hide glue, which doesn't hold up well with heat or moisture. Higher-grade

bonding agents such as phenolic resin are used for industrial grade sandpapers.

What are the different types of sandpaper used for?

There are four main types of sandpaper abrasives used in woodworking; Aluminum Oxide, Garnet, Silicon Carbide, and Ceramic. The two used most often by woodworkers are Aluminum Oxide and Garnet.

Aluminum Oxide is one of the most common woodworking abrasives. It exhibits a high degree of friability. This means that when heat and pressure are applied it fragments. This is highly desirable because when Aluminum Oxide fragments it creates new sharp edges. This self-renewing property allows aluminum Oxide to last longer than most other sandpapers.

Garnet is a natural abrasive that is still commonly used in woodworking. It is not friable like Aluminum Oxide and tends to wear out a lot faster. This is not necessarily a detriment since garnet will produce a smoother surface than aluminum oxide of the same grit

number. It will however cut slower than its stronger cousin will. Garnet is also an excellent choice for a final sanding paper. It has the tendency to burnish, or seal off a wood's grain. This allows pigmented stains to penetrate woods such as birch, pine, or lauan, more evenly.

Silicon Carbide is harder than both Aluminum Oxide and Garnet. This makes it suitable for cutting harder materials such as metal, paint, plastic, and fiberglass. Silicon carbide is also a friable abrasive but wood is not hard enough of a material to fracture its surface so it will tend to wear out faster than Aluminum Oxide.

Ceramic is not a friable material. It is the hardest of all of the abrasives commonly available. It is generally available in only the roughest grades for fast wood removal in woodworking. The most common use for ceramic sandpaper is shaping and leveling of wood. It is also one of the most expensive materials available. You are most likely to see ceramic abra-

sives used on belt sander belts.

Their uses are as follows:

Aluminum Oxide--Wood, Metal, Paint, Fiberglass Plastic
Garnet--Wood
Ceramic--Wood
Silicon Carbide--Metal, Paint, Fiberglass, Plastic

What's the difference between "Open-coat" and "Closed-coat" sandpaper?

Open-coat sandpaper has gaps and open spaces between the grits that helps prevent clogging by giving the sawdust a place to go. Open-coat is most often used for woodworking. The spaces in the sandpaper can cover 40-60% of the sandpaper's surface. Closed-coat is better for sanding metal and wood finishes but clogs easily with sawdust.



Northwest Carvers Association

Banquet Reservation Form
Saturday November 12th, 2011



CHARLIE'S RESTAURANT

113 E Main Ave. Puyallup, WA 253-845-0588

Banquet forms must be received by October 27th, to ensure your place.

Dinner at 6:00pm - Bar will be open at 5:30pm

All Dinner Choices are \$25.00 per person

Fresh Roasted Prime Rib: 12 oz Prime Rib served with baked potato, au jus and horseradish.

Chicken Ala Florence: Breast of chicken sautéed with mushrooms, fresh spinach and artichoke hearts in a creamy white wine sauce with angel hair pasta.

Deep Fried Prawns: Large Black Prawns hand breaded and deep fried. Served with baked potato, lemon and tarter sauce.

Choice Rib Eye Steak: 12 oz Rib Eye Steak cooked the way you like it and served with baked potato.

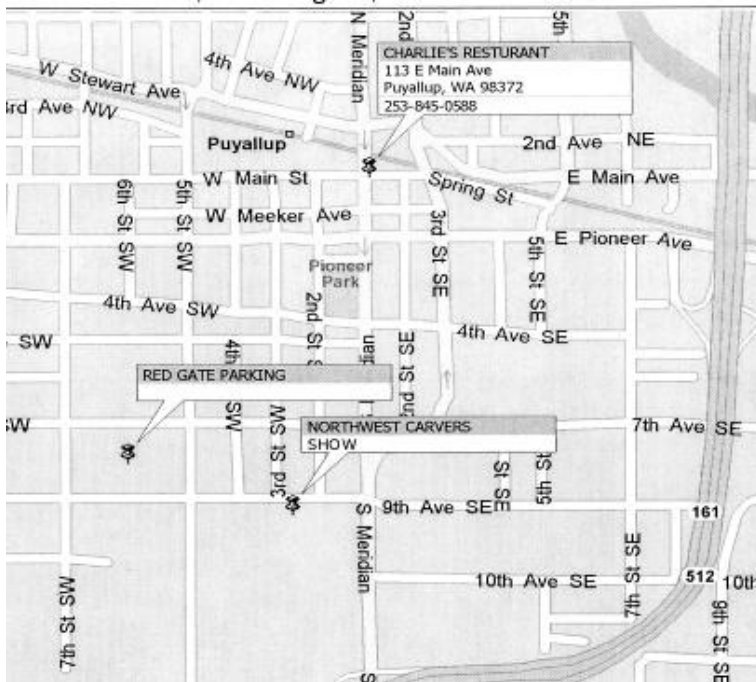
Coho Salmon: 8 oz Coho Salmon char-broiled topped with lemon garlic butter and served with a baked potato.

Fettuccine Alfredo: Served with French Bread

Includes Caesar Salad, dessert, non-alcoholic beverage, tax, and service charge

Auction approximately 7:00 PM

Item preview 6:00 - 7:00 PM



PLEASE RESERVE _____ **SEATS AT THE BANQUET. TOTAL FEE: \$** _____

QTY: _____ Prime Rib _____ Chicken _____ Prawns _____
 _____ Rib Eye _____ Salmon _____ Fettuccine _____

Name: _____ phone: _____
 Address: _____ state _____ zip: _____
 City: _____

Please write check for Banquet reservation. Mail check and form to address below.
 Please make all checks payable to NWCA.

NWCA BANQUET
C/O RICHARD MAZZA
13317 112TH AVE. E
PUYALLUP, WA. 98374
[253-848-3636]

Plenty of parking
Wheelchair accessible

Candid Camera 9-9



Bob Harkness shared his Western Meadowlark



Brian Hogan shared his Rooster that's going to the Fair



Dave Thompson brought his Chip Carved Egg.



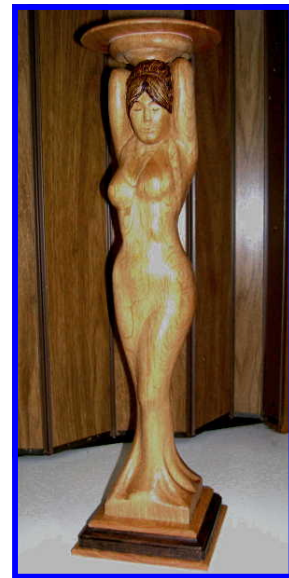
Dale Goebel showed a 32 year old carving of Mickie, Minnie, and Pluto



This looks like a serious conversation. Must be about Bob's recovery.



I think Dave, Marlo, Richard, Art, and Dorothy are looking for YOU! Missed all of you at the meeting.



James Collins carved an Oak Candlestick Holder & a Cypress Knee Wizard (above left)



Photography by Dottie Moody

Photos from Puyallup Fair by James Collins



James Collins
 Div. 200 - Woodworking
 Class: 1802



David Gorkoff
 Div. 200 - Woodworking
 Class: 1801



James Collins
 Div. 200 - Woodworking
 Class: 1802



Dale Gorkoff
 Div. 200 - Woodworking
 Class: 1701



James Collins
 Div. 200 - Woodworking
 Class: 1802



Richard Laplante
 Div. 201 - Woodworking - Figures and Figurines
 Class: 2120



Lloyd Case
 Div. 200 - Woodworking
 Class: 1245



Richard Laplante
 Div. 201 - Woodworking - Figures and Figurines
 Class: 2120

Richard Laplante
 Div. 201 - Woodworking - Figures and Figurines
 Class: 2121



Richard Laplante
 Div. 201 - Woodworking - Figures and Figurines
 Class: 2120

Richard Laplante
 Div. 201 - Woodworking - Figures and Figurines
 Class: 2121

Richard Laplante
 Div. 201 - Woodworking - Figures and Figurines
 Class: 2120

Richard Laplante
 Div. 201 - Woodworking - Figures and Figurines
 Class: 2120



James Collins
 Div. 200 - Woodworking
 Class: 1701



Richard Laplante
 Div. 201 - Woodworking - Figures and Figurines
 Class: 2120

Cascade Carvers Supply Woodcarving Tools
Supplies
& Books
Toll-Free: 1-800-828-5576

Ron & Linda Lunde

2008 Fruitland, Kennewick, WA 99337

Carving Tools & Knives: Diobsud Forge, Flexcut Power Carvers: NSK, Ram,
Foredom Airbrushes: Badger, Paasche Colwood Woodburners & Tips: Ty-
phoon Burs and Bits

<http://www.cascadecarvers.com> 1.800.828.5576 (orders only please)

Office: 509.585.7787 (for questions and answers)



Gil & Bonnie Drake

128th St NE, Arlington, WA 98223

Handmade carving tools, carving supplies, & accessories
<http://drakeknives.com/index.htm>

GILBERTLDRAKE@aol.com

360.659.6778

Sumner Wood Worker Store

John Schmit

908 Cherry Ave. Sumner, WA 98390

Tues – Sat 10 am – 5:30 pm 253. 891.9413

DECORATIVE BIRD CARVER

Larry Martin

5716 Timberlane Dr. NW, Gig Harbor, WA 98335

Lessons Available, Commissions Accepted

253.851.9478

JOHN TEMPLAR WOODCARVING & ARCHERY



John Templar

Rochester, WA 98579

Woodcarvings Fish Decoys

Private Instruction, Group Activity, Introductory
Classes in both woodcarving & archery with instructor certification & coaching
in archery

360.273.0977

THE BARK GUY – COTTONWOOD BARK

Art Olver

568 Valentine Ave SE, Pacific, WA 98047

Excellent quality Award Winning bark

For Pricing Call 253.804.3488

BEAVER LAKE WOODWORKS

Joe McConnell

1919 E Beaver Lake Dr SE, Sammamish, WA 98075

NW Native Style Woodcarving, Classes & Commissions

<http://beaverlakewoodworks.org> 425.391.0661

beaverlakewoodworks@comcast.net

Ronald R. Hall, Pres

5963 Corson Ave S Seattle, WA 98108

WOODCRAFT
Helping You Make Wood Work®

Store Hours: M., T., W., & F 9 am - 7 pm

Thurs 9 am - 9 pm, Sat 9 am - 6 pm

From I-5 take Exit 162 (Corson Avenue/Michigan St)

From the base of the exit ramp, Woodcraft is on your right, in the
strip mall before the traffic light

woodcraft307@eschelon.com

206.767.6394 Fax 206.767.8034

SUPPORT THESE SPONSORS

EQUIPMENT FOR SALE, nearly new

SHOP FOX brand midi lathe, all tools, turning kits, all equipment, books, and manuals.

NOVA CHUCK for use with the lathe.

DRILL PRESS with an oscillating sander & sanding wheels (drill press with stand).

If interested call Betty Rahbar for prices and more information. Located in Sumner, WA

253-891-8191 or cell 253-225-5715

Sep 18-24	Shuswap School of Carving and Arts , Sorrent Centre, Sorrento, BC sponsored by Shuswap Carvers Society. Contact LeRoy Scott, 1.250.554.3552 or nleroyscott@shaw.ca www.bccarvingschool.com
Sep 23	Caricature Carvers of America will be in Boise, ID for its annual meeting and on Saturday the 24 th it will host three events open to the public and carvers. To make reservations contact Gene Fuller efuller@boisestate.edu
Oct 1-2	Spokane Carvers' 22nd annual show/sale in Bldg. 6 of Spokane Community College. Special category "Happiest Holiday." Prospectus available July 1. Jack Kennedy, 13711 E 42nd Ave, Spokane, WA 99206, (509) 924-5758; Tim Rahman, (509) 244-3467, email SpokaneCarvers-Info@hughes.net . Mail-ins: Gloria Strandquist, (509) 924-1186. http://SpokaneCarvers.com
Nov 12-13	Northwest Carvers Assn. 31st Annual Show & Sale at Western Washington Fairgrounds, 9th S.W. Puyallup, WA. in the Restaurant Bldg. (Red Gate) Contact Bob Harkness 253.833.4626 or c.l.harkness@att.net www.woodcarvers.org



Northwest Carvers Association
PO Box 6092
Federal Way, WA 98063-6092
www.woodcarvers.org

MEETING LOCATION:

Lakeland Community Center
4016 South 352nd Street
Federal Way, WA

DIRECTIONS TO CENTER:

From I-5 take Hwy 18 EAST to Weyerhaeuser Way S. exit. Go RIGHT on Weyerhaeuser Way S. and take the first LEFT onto S. 4th Way. It turns into 344th St. Take the first RIGHT onto 38th Ave. S; it winds through a residential area and becomes 37th Ave S. Turn LEFT onto 352nd St. Lakeland Community Center is on the LEFT (North) side of the street where the road dips down.

From Military Road S. go WEST on 352nd St. Lakeland Community Center is on the RIGHT (North) side of the road. NOTE: You cannot exit from Hwy 28 onto Military Rd S.

GENERAL MEETING

2nd Friday of each month at the Lakeland Community Center
Doors open at 5:30 pm for set-up, open carving, visiting, showing off, or looking for library items. Potlucks are at 6:00 pm. 7:00 pm meeting is called to order.

STEERING MEETING

1ST Friday of every month at 6:30 pm at the Sumner Public Library at 1116 Fryer Ave., Sumner, WA

VISITORS & GUESTS WELCOME



If you did not receive a prospectus for some reason, there is now one online at

http://www.woodcarvers.org/prospectus_registration_forms.htm

Or contact Bob Harkness c.l.harkness@q.com 253-833-4585

get your carvings pre-registered now

31st annual Show & sale

Nov. 12-13, 2011

Chippings

www.woodcarvers.org



Northwest Carvers Assn.

PO Box 6092

Federal Way, WA 98063-6092

*31st Annual
Show & Sale
November 12-13*



**HAPPY
HALLOWEEN**



Next meeting

October 14, 2011

